

School Values

Respect
Resilience
Strive for
Excellence

Principal: Emma Hampton
Assistant Principal Health & Wellbeing: Reachel Armstrong
Assistant Principal Curriculum: Jessica Darcy
School Council President: Scott Hanson

**School Purpose**

To provide an engaging, friendly, safe and supportive environment that enhances learning, personal growth and well-being of all students, enabling them to become lifelong learners.

DATES TO REMEMBER

1st May - District Cross Country (selected students in 3-6)
 5th May - School Photo Day
 6th May - Mother's Day Stall
 8th May - Mother's Day Open Morning
 11th May - School Dental Van starts

Principal's Report

Dear Parents and Guardians,

Welcome back to everyone for Term Two. We have had a wonderful start back and are looking forward to a productive term.

Our students in Grades 3-6 are excited this term as we restart our Stephanie Alexander Kitchen Garden Program. We also have our new chickens which has caused alot of excitement. Stay tuned for the results from our naming competition that Miss Sydney and our JSC have been running. We will then work out how to tell them apart and remember their names!

This week you should have recieved via Compass the booking link for our Term 2 Parent Teacher Interviews on Tuesday 23rd July. These interviews are a chance for you to meet with your child/ren's classroom/specialist teachers to gain an academic update that complements the Semester One Report you will recieve on Friday 19th June. If you require assistance to make your booking, please reach out to Sam.

Our 2026 School Photos are on Tuesday 5th May. Orders are able to be placed online via Advanced Life or you can complete a paper order form. All orders need to be placed by Friday 15th May. Please ensure all students are sent to school in full school uniform. We look forward to seeing everyone's smiling faces!

The School Dental Van commences on Monday 11th May. There are no requirements from parents/guardians for this. The company will operate within the school day and send any communication home with your child/ren. If they finish early and have vacancies to see students who did not complete the form, we will post this via Compass.

This term, our Curriculum Day will be on Tuesday 9th June. On this day, our staff will be working with an Inclusion Coach from the Department of Education to strengthen our classroom environments and supports for students. No students are to attend school on this day. Camp Australia will communicate if they are offering a program on this day.

Our Assembly cycle starts this Friday. We have our first whole school assmebly. Please refer to our Assembly Schedule for which assembly is each week. Next Friday we have our Mother's Day Open Morning so there will be no assembly next Friday.

Have a great weekend,

With thanks

Emma Hampton



Bike Safety

We have had a great start to the term and many of our students have shared lots of exciting adventures they went on over the holidays. It is great to see students wearing a helmet when riding their scooter or bike however, there are a few still choosing not to. Helmets keep our children safe in the event they are injured while riding their scooter or bike. We appreciate the communities support in ensuring our students follow the road safety rules.

The Resilience Project

The Resilience Project has four pillars: Gratitude, Empathy, Mindfulness and Emotional Literacy (GEM+EL). This term we will be focusing on Emotional Literacy which is the ability to understand and express feelings. For children it is also about learning how to get along with each other, share and understand their own feelings. Learning to recognise and identify their own emotions and how to respond to the feelings of others is a core part of a child’s social development. This is the foundation for developing friendships. Being able to identify how you feel as an individual is a crucial step in your ability to be emotionally regulated. When you can name what you're feeling, you can then use strategies that help you to respond in an appropriate way to different situations and challenges you encounter.

At home you can support your child by:

- Being a positive role model of what you would like your child to do
- Talk to children about your own feelings
- Read stories about being a friend, happy feelings, sad feelings and problem solving
- Talk about things other people do and how they might feel
- Build up a language of pro-social behaviour by talking about taking turns, sharing, helping and looking after others
- Praise your child when you notice your child is making an effort to get along with other children



Miss Armstrong



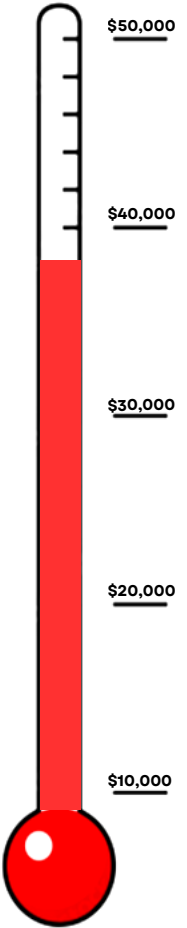
TERM 2

FUNDRAISING



- Coming up...**
- Mother's Day Raffle
 - Mother's Day Stall
 - Hot lunch fundraiser

With this years fundraising efforts in combination with last years fundraising efforts we are hoping to resurface the 3-6 playground.



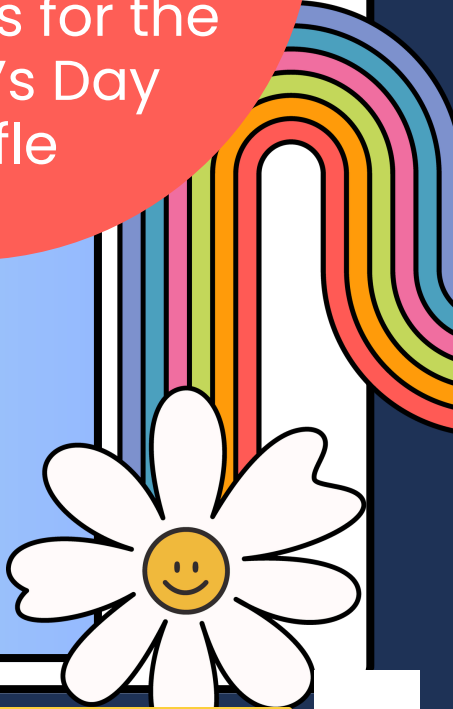
2026
Fundraising options,
have your say...

https://docs.google.com/forms/d/e/1FAIpQLSfKpfJ9V25t_f_CAtc2YVTMCPx8T-fQa5OSbznjlsdGqD_6w/viewform?usp=header



Wanted!
Volunteers for the
Mother's Day Stall
&
Donations for the
Mother's Day
Raffle

- Funds raised so far...**
- Movie Night Fundraiser \$2102.00
 - Movie Night Raffle \$605.00
 - Dominos Hot Lunch \$458.00
 - Easter Raffle \$555.00





Earlier this year 23 students from Grade 5/6 were selected to represent AMPS in the annual Hobson's Bay Arts Society 5x7 Art Prize. The students individually created a canvas based on this year's theme of 'Nostalgia' and chose a favourite memory to inspire their artwork for our 2026 school entry.

We are thrilled to announce that AMPS was awarded 3rd prize in the Hobsons Bay school entry section! This is an enormous achievement for our students and we are so proud of their creativity.

On Thursday 23rd April, our Grade 5/6 Art group students enjoyed an afternoon excursion to Louis Joel Gallery to view their work on display. The students enjoyed viewing their own and others' artworks in the gallery for all to see. We learned about how exhibitions often are about a theme or topic, and how different artists can show these topics in different styles and media. Afterwards we enjoyed hot chips and lunch in the park. Our students are to be commended for showing our school values at all times on our excursion. Well done everyone for such a wonderful start to the year!

Our school entry will be returned to AMPS to put up for display in our school in the coming weeks.



ART SUPER STAR

Sienna from 1/2D has been a busy artist! Last term she brought in her beautiful flower painting that she completed at home to share with her grade here at AMPS. Keep up the amazing art Sienna!

If you have made something at home that you are proud of and wish to share, please bring it in as we would love to see it too.



SCHOOL PHOTOS

order your school photos now

to order visit: www.advancedlife.com.au

enter code: 1AY YCN PGR



scan to order

**or collect a cash order envelope
from your school office**



advancedlife
school photography & print specialists



Community NEWS



HELP SHAPE our council services

Have your say and go in the draw to win one of three \$50 gift vouchers*

Council is reviewing our libraries, community hubs, and customer service centres to make sure they're easy to use and meet everyone's needs.



Tell us what you like, what works well, and what we could improve. Your feedback will help us plan better services for the future.

SURVEY OPEN
1 April - 8 May 2026
participate.hobsonsabay.vic.gov.au

*Terms and conditions apply.

Scan here to have your say ↗



HOBSONS BAY LANGUAGE LINE 9932 1212
Services available for all languages
Your Council in your language

Hobsons Bay COUNCIL+



SHOTO KARATE AUSTRALIA

WHY TRAIN WITH US?

- Build confidence & self-discipline
- Improve focus & respect
- Learn practical self-defence
- Boost fitness & coordination
- Friendly, supportive environment
- Ages 5+ | All skill levels welcome

TUESDAY & THURSDAYS:

TIGERS (AGES 5-8*) - 5:30-6:00PM.
JUNIORS (AGES 9-14*) - 6:00-7:00PM
ADULTS (15+*) - 7:00-8:00PM
*SENSEI'S DISCRETION APPLIES

LIMITED OFFER

FREE Trial Class
+
FREE Uniform (\$80 Value)

MORE INFORMATION:

☎ Call or Text: 0409 181 227
✉ shotokarate@dodo.com.au

Follow Us!  

Community NEWS



What makes Paul Sadler Swimland different to other swim schools?

We've been teaching children and adults to swim and survive in deep water since 1972!

At Paul Sadler Swimland Altona, we specialise in:

- Teaching essential water safety and survival skills
- A gentle, child-focused approach to learning
- Salt-water pools that are kind to skin and eyes
- Lessons for babies 4 months (4 & 5 month olds swim free) all the way to Adults (Women's only classes available)



Paul Sadler Swimland Altona
Westgate Leisure Complex,
61-69 Doherty's Rd, Altona North
03 8595 3159
altona@paulsadlerswimland.com

PAUL SADLER SWIMLAND
THE SURVIVAL SPECIALISTS • SINCE 1972

LEARN TO SWIM
WITH THE SURVIVAL
SPECIALISTS AT

Altona

Swimming lessons are a necessity, not a luxury



PAUL SADLER SWIMLAND
THE SURVIVAL SPECIALISTS • SINCE 1972



BAYWEST MUSIC SCHOOL

BAYWEST MUSIC SCHOOL IS A LOW COST MUSIC SCHOOL LOCATED AT ALTONA MEADOWS COMMUNITY CENTRE AND HAS BEEN TEACHING LOCAL ADULTS AND CHILDREN FOR 22 YEARS.

THE COST OF LESSONS ARE \$18 FOR KEYBOARD, GUITAR, VIOLIN AND SINGING AND \$25 DRUMS.

FOR DETAILS, PLEASE CALL STEPHEN ON 0425-797-390



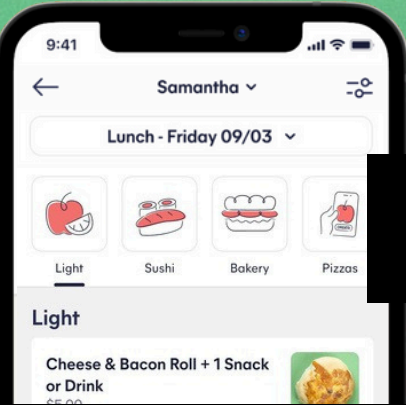
SOME PRODUCTS LIKE SUSHI NEED TO BE ORDERED THE DAY BEFORE DELIVERY

TK TUCKSHOP

TERM 2

Lunch packs starting at \$4.50

TUESDAYS AND FRIDAYS



ORDER BY 8AM ON THE DAY USING THE SPRIGGY SCHOOLS APP

DOWNLOAD OUR APP



CANTEEN MENU



ICY POLES

FROSTY FRUITS	\$1.50
ZOOPER DOOPER	50c
CALIPPO	\$2.00
LIFE SAVER	\$2.00
CYCLONE	\$2.00
ICY POLE	\$1.00



SNACK

POTATO CHIPS	\$1.00
KILBER PYTHON	50c
FREDDO FROGS	50c
COOKIES	\$2.00



Choose a Main Course item, then select 1 or 2 items from the Snack/Drink Menu to make up a 2 or 3 Course Lunch Pack

Main Course Menu

BAKERY - All items freshly baked this morning!

	2 Course	3 Course
Cheese & Vegemite Scroll (V)	\$6.45	\$9.15
Savoury Bite 'Little Frank' Roll	\$6.45	\$9.15
Topped with Only Cheese Roll (V)	\$6.45	\$9.15
Cheese & Bacon Roll	\$7.45	\$10.15
Scroll with Ham & Cheese	\$9.95	\$12.65
Frankfurt 'in a blanket' with Sauce & Cheese (2)	\$10.95	\$13.65

PIZZA / SAUSAGE ROLLS / GOZLEME / PASTIZZI / QUESADILLA /

PASTIES - SERVED AT ROOM TEMPERATURE!

Ricotta & Spinach Pastizzi (2) (V)	\$8.95	\$11.65
Margherita Pizza TWIST(V)	\$9.95	\$12.65
Sausage Roll with Sauce	\$9.95	\$12.65
Margherita PITA Pizza (V)	\$9.95	\$12.65
Quesadilla (Chicken) served with Sour Cream (H)	\$10.95	\$13.65
Ham & Pineapple Pizza Slice	\$10.95	\$13.65
BBQ Chicken Pizza (H)	\$10.95	\$13.65
Pepperoni Pizza (H)	\$10.95	\$13.65
Vegetable Pastie with Tomato Sauce (H, V)	\$12.75	\$15.45
Lamb & Beef Gozleme (H)	\$13.45	\$16.15
Mushroom & Spinach Gozleme (Vg)	\$13.45	\$16.15
Spinach & Cheese Gozleme (V)	\$13.45	\$16.15

SUSHI HAND ROLLS (2pc) -Soy Sauce (GF) Provided

Teriyaki Chicken Hand Rolls (H)	\$12.45	\$15.15
Crispy Chicken (Schnitzel) Hand Rolls (H)	\$12.45	\$15.15
Cooked Tuna Hand Rolls (GF)	\$12.45	\$15.15
Avocado Hand Rolls (GF, Vg)	\$12.45	\$15.15
Cucumber Hand Rolls (GF, Vg)	\$12.45	\$15.15
Vegetarian Hand Rolls (GF, Vg)	\$12.45	\$15.15
Tofu Hand Rolls (GF, V)	\$12.45	\$15.15

RICE PAPER ROLLS (2pc) -(Wednesday, Thursday & Friday only)

Chicken Rice Paper Rolls (GF, H)	\$13.45	\$16.15
Prawn Rice Paper Rolls (GF, H)	\$13.45	\$16.15
Vegetarian Rice Paper Rolls (GF, Vg)	\$13.45	\$16.15

SANDWICHES / ROLLS / WRAPS

Strawberry Jam Sandwich (1.5) (Vg)	\$7.45	\$10.15
Vegemite Sandwich (2) (Vg)	\$8.95	\$11.65
Plain Cheese Sandwich (2) (V)	\$9.95	\$12.65
Simple Salad Roll (Vg)	\$9.95	\$12.65
Wholegrain Ham & Cheese Sandwich (1.5)	\$10.95	\$13.65
Cheese & Salad Roll (V)	\$11.50	\$14.20
Roast Beef, Chutney, Cheese & Lettuce Roll	\$11.50	\$14.20
Turkey, Cranberry, Lettuce & Cheese Sandwich (1.5)	\$11.50	\$14.20
Chicken, Mayonnaise & Salad Roll (H)	\$12.75	\$15.45
Mexi Style WRAP w. Chicken, Salsa, Cheese, Salad, Corn Chips(H)	\$12.75	\$15.45

SALADS / PICNIC BOXES / POKE BOWLS

Fresh Fruit Salad -Main Course Size (GF, Vg)	\$11.50	\$14.20
Ham Picnic Box (GF)	\$11.50	\$14.20
Vegetarian Picnic Box (GF, V)	\$11.50	\$14.20
Greek Style Salad with Feta & Olives (GF, V)	\$12.75	\$15.45
Tortellini Pasta Salad (V) (Wednesday, Thursday & Friday only)	\$12.75	\$15.45
Poke Bowl with Teriyaki Chicken (H)	\$13.45	\$16.15

GF SANDWICHES

GF Ham & Cheese Sandwich (1.5)	\$10.95	\$13.65
GF Chicken (with Mayo) & Cucumber Sandwich (1.5)	\$10.95	\$13.65

Snack/Drink Menu

FRESH FRUIT & VEGETABLES

Apple pieces, Lemon juice, Cinnamon & Brown Sugar	+\$1.00
Fresh Fruit Combo	+\$1.00
Freshly Chopped Orange Segments	Included
Freshly Chopped Watermelon Pieces	Included
Whole Fruit -Apple	Included
Whole Fruit -Banana	Included
Bag of Grapes	Included
Carrot, Cucumber, Red & Yellow Capsicum	Included
Cherry Tomatoes, Tasty Cheese & Rice Crackers	Included
Corn Wheels & Lightly Steamed Broccoli	Included
Edamame (Lightly Salted)	Included

BAKERY - SWEET

ANZAC Biscuit	Included
Choc Chip Cookie	Included
Cinnamon Doughnut	Included
Cornflake Cookie	Included
Finger Bun with Sprinkles	Included
"Not Cross" Bun	Included
Lamington	Included
Blueberry Muffin	+\$1.00
Carrot Cup Cake (GF/DF/Vg)	+\$1.00
Choc Cup Cake (GF/DF/Vg)	+\$1.00
Jam Drop Biscuit (GF)	+\$1.00
Passionfruit Melting Moment Biscuit	+\$1.00
Yo Yo Biscuit	+\$1.00

SUSHI

1pc Tuna Sushi (GF)	+\$1.00
---------------------	---------

POPCORN / HARVEST SNAPS

Popcorn -Slightly Sweet, Lightly Salted	Included
Popcorn -Lightly Salted	Included
Harvest Snaps (GF/DF/Vg)	Included

DRIED FRUIT/LEGUMES

Lime & Black Pepper Chickpeas	Included
Roasted Chickpeas	+\$1.00
Balsamic & Sea Salt Fava Beans	
Dried Pineapple Pieces by "Peels"	

DIPS WITH MINI RICE CAKES / CORN CHIPS

Avocado Dip with Mini Rice Cakes	+\$1.00
Spicy Capsicum Dip with Mini Rice Cakes	+\$1.00
Spring Onion Dip with Mini Rice Cakes	+\$1.00
Tzatziki Dip with Mini Rice Cakes	+\$1.00
Corn Chips with Salsa (GF)	+\$1.00
Mango Chutney with Vege Chips (GF, Vg)	+\$1.00

YOGHURTS / BOWLS / CUPS

Raspberry Jelly Cup	Included
Strawberry Yoghurt (Dairy Farmers)	+\$1.00
Vanilla Yoghurt (Dairy Farmers)	+\$1.00
Stewed Rhubarb and Apple with Custard	+\$1.00

DRINKS

Apple Juice (Nippy's)	Included
Orange Juice (Nippy's)	Included
Chocolate Milk (Nippy's)	Included
Strawberry Milk (Nippy's)	Included
Full Cream Milk	Included



GF = Gluten Free, DF = Dairy Free, H = Halal, V = Vegetarian, Vg = Vegan

ORDER NOW

Descriptions, dietary and allergen information available on our website.

www.classroomcuisine.com.au

Term 2 Important Dates



23rd April - 5/6 Art Group Excursion



1st May - District Cross Country



5th May - School Photo Day



6th May - Mother's Day Stall



8th May - Mother's Day Open Morning



11th May - School Dental Van Starts



26th May - National Sorry Day



8th June - King's Birthday



9th June - Term 2 Curriculum Day



11th & 12th June - Winter Sports



18th June - Hot Lunch Fundraiser



23rd June - Parent Teacher Interviews
- 1pm Dismissal



26th June - Last Day of Term Two -
Students dismissed at 2:15pm

Term 3 Starts 13th July



Term 2 Assembly Schedule

1st May - Whole School (3/4B presenting)

15th May - Prep & 1/2 (1/2C presenting)

22nd May - 3/4 & 5/6 (3/4C presenting)

29th May - Whole School (1/2D presenting)

5th June - Prep & 1/2 (Prep presenting)

12th June - 3/4 & 5/6 (3/4D presenting)

19th June - Whole School Celebration Assembly

All assemblies will commence at 9:15am.
Weather will determine location choice of
Hall, Netball Court or Undercover area

